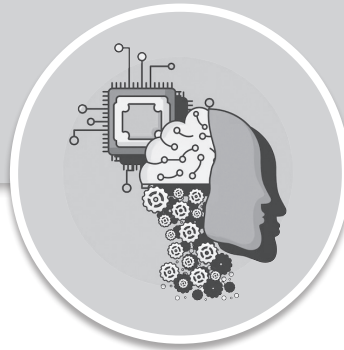


DATA SCIENCE & ARTIFICIAL INTELLIGENCE

Artificial Intelligence



Comprehensive Theory
with Solved Examples and Practice Questions





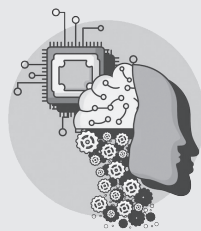
MADE EASY Publications Pvt. Ltd.

Corporate Office: 44-A/4, Kalu Sarai (Near Hauz Khas Metro Station), New Delhi-110016 | **Ph. :** 9021300500

Email : infomep@madeeasy.in | **Web :** www.madeeasypublications.org

Artificial Intelligence

© Copyright by MADE EASY Publications Pvt. Ltd.
All rights are reserved. No part of this publication may be reproduced, stored in or introduced into a retrieval system, or transmitted in any form or by any means (electronic, mechanical, photo-copying, recording or otherwise), without the prior written permission of the above mentioned publisher of this book.



MADE EASY Publications Pvt. Ltd. has taken due care in collecting the data and providing the solutions, before publishing this book. In spite of this, if any inaccuracy or printing error occurs then **MADE EASY Publications Pvt. Ltd.** owes no responsibility. We will be grateful if you could point out any such error. Your suggestions will be appreciated.

EDITIONS

First Edition : 2025

Second Edition : 2026

CONTENTS

Artificial Intelligence

CHAPTER 1

Introduction to Artificial Intelligence 1-14

| | | |
|-----|-----------------------------------|----|
| 1.1 | Artificial Intelligence (AI)..... | 1 |
| 1.2 | Why AI is needed..... | 1 |
| 1.3 | The History Of AI..... | 2 |
| 1.4 | Risk and Benefits of AI..... | 4 |
| 1.5 | Types of AI..... | 6 |
| 1.6 | AI Agent..... | 8 |
| | <i>Student Assignments</i> | 13 |

CHAPTER 2

Search Algorithms 15-50

| | | |
|-----|----------------------------------|----|
| 2.1 | Introduction to Search..... | 15 |
| 2.2 | Uninformed Search..... | 16 |
| 2.3 | Informed Search..... | 28 |
| 2.4 | Adversarial Search..... | 39 |
| | <i>Student Assignments</i> | 48 |

CHAPTER 3

Logic and Knowledge Representation 51-66

| | | |
|-----|---|----|
| 3.1 | Propositional Logic; First Order Logic..... | 51 |
| 3.2 | Logical Connectives or Operators..... | 51 |
| 3.3 | Well-Formed Formulas (WFFs)..... | 55 |
| 3.4 | Normal forms of Well-Formed Formulas..... | 57 |
| 3.5 | Rules of Inferences for Propositional Calculus..... | 58 |
| 3.6 | Predicate Calculus..... | 60 |
| 3.7 | Universal and Existential Quantifiers..... | 60 |
| | <i>Student Assignments</i> | 64 |

CHAPTER 4

Reasoning Under Uncertainty 67-89

| | | |
|-----|--|----|
| 4.1 | Introduction to Uncertainty..... | 67 |
| 4.2 | Conditional Independence Representation..... | 69 |
| 4.3 | Exact Inference..... | 75 |
| 4.4 | Approximate Inference..... | 80 |
| | <i>Student Assignments</i> | 88 |

Introduction to Artificial Intelligence

1.1 ARTIFICIAL INTELLIGENCE (AI)

Artificial Intelligence (AI) is the study of intelligent agents that perceive their environment and take actions to achieve specific goals. These agents act based on the information they gather, aiming to optimize their performance in dynamic environments.

Example: A vacuum cleaner agent perceives dirt and takes actions to clean the room.

NOTE



- There is often confusion between “**artificial intelligence**” and “**machine learning**”. Machine learning, a subfield of AI, focuses on improving performance through experience, though not all AI systems rely on it.
- Humans are not “**irrational**” in the sense of lacking mental clarity; rather, human decisions are not always mathematically optimal.

1.2 WHY AI IS NEEDED

1. Automating Work

AI can take over repetitive, time-consuming tasks that humans find boring or inefficient.

For example, robots in factories can assemble products nonstop without errors, and AI tools can organize and analyze large datasets quickly. This saves time, reduces mistakes, and allows people to focus on creative or strategic activities.

2. Solving Tough Problems

AI helps solve problems that are too complex for humans to handle effectively. For instance, AI is used in weather forecasting to analyze millions of data points, in medical diagnostics to detect diseases from scans, and in supply chain management to plan the most efficient routes. It achieves results faster and more accurately than traditional methods.

3. Better Decisions

AI systems analyze vast amounts of data to provide insights and predictions. This helps decision-making in areas like finance, where quick trading decisions are needed, or in healthcare, where patient treatment plans must be precise. AI ensures decisions are based on facts and patterns, reducing the risk of human errors or delays.

4. Creating New Technology

AI powers innovations such as self-driving cars, virtual assistants like Alexa, and automatic language translation tools. These technologies make life more convenient and open up new possibilities in fields like robotics, transportation, and communication. AI acts as a foundation for combining ideas across disciplines like science and engineering.

5. Improving User Experience

AI makes digital platforms more personal and engaging by learning user preferences. For example, streaming services like Netflix recommend movies you might enjoy, and shopping platforms like Amazon suggest products based on your past purchases. This personalization enhances satisfaction and convenience for users.

6. Helping the World

AI is being used to tackle global challenges like climate change, poverty, and education. It optimizes renewable energy use, helps farmers improve crop yields, and provides virtual tutors for students in remote areas. These efforts make a significant positive impact on society and the environment.

7. Learning About Intelligence

AI research helps us understand how humans think and solve problems. It also explores the possibilities of creating intelligent machines and raises philosophical questions about consciousness and ethics. This deepens our knowledge of both natural and artificial intelligence while inspiring further innovation.

1.3 THE HISTORY OF AI

The milestones in AI history can be highlighted through Turing Award winners: **Marvin Minsky (1969)** and **John McCarthy (1971)** laid the foundations of AI with representation and reasoning. **Ed Feigenbaum** and **Raj Reddy (1994)** contributed to expert systems that solve real-world problems by encoding human knowledge. **Judea Pearl (2011)** advanced probabilistic reasoning techniques to handle uncertainty effectively. **Yoshua Bengio, Geoffrey Hinton, and Yann LeCun (2019)** revolutionized AI with deep learning, making multilayer neural networks a crucial part of modern computing. These achievements mark key phases in AI development.

1. The Inception of Artificial Intelligence (1943-1956)

- The foundations of AI were laid in the early 1940s with the work of scientists like **W. Grey Walter** and **John von Neumann**, who explored the concept of artificial neural networks.
- In 1950, **Alan Turing** introduced the Turing Test to evaluate machine intelligence, posing the question: "Can machines think?"
- The term Artificial Intelligence was coined in 1956 at the **Dartmouth Conference**, where pioneers like **John McCarthy, Marvin Minsky, Nathaniel Rochester** and **Claude Shannon** formalized AI as a research field. They proposed that "every aspect of learning or any other feature of intelligence can be so precisely described that a machine can be made to simulate it."

2. Early Enthusiasm, Great Expectations (1952-1969)

- During this period, there was a surge of optimism and excitement about AI's potential. Researchers believed that intelligent machines could be built within a few decades.
- Programs like **The Logic Theorist (1955)** by **Newell and Simon** and **ELIZA (1966)** by **Joseph Weizenbaum** were early examples of AI success, achieving feats like solving mathematical problems and simulating conversations.
- **Marvin Minsky** and **John McCarthy** were central figures in this era, contributing to early AI theories, including the concept of machine learning and reasoning through symbolic manipulation.

3. A Dose of Reality (1966-1973)

- The early excitement about AI faced a reality check during this period, as researchers began to realize the challenges involved in building truly intelligent machines.
- In 1966, **Joseph Weizenbaum** created ELIZA, an early chatbot, which demonstrated the potential of AI for simulating human conversation, but also revealed the limitations of the technology.
- This period marked the beginning of a slowdown in AI research funding, as it became clear that the initial expectations were overly optimistic.

4. Expert Systems (1969-1986)

- In the 1970s and 1980s, AI research shifted towards **Expert Systems**, which were designed to simulate the decision-making abilities of a human expert in specific domains.
- Expert systems were based on encoding human knowledge and rules in knowledge bases, allowing them to solve complex problems in areas like medicine, engineering, and finance.
- **Ed Feigenbaum, Raj Reddy** and **John McCarthy** played pivotal roles in developing these systems. The most notable expert system, **MYCIN**, was developed in the 1970s to diagnose bacterial infections.

5. The Return of Neural Networks (1986-Present)

- In the mid 1980s, **neural networks** experienced a revival, fueled by the development of more efficient algorithms and greater computing power.
- The introduction of the **back propagation algorithm** by **Geoffrey Hinton, David Rumelhart** and **Ronald Williams** allowed neural networks to be trained more effectively, leading to improved performance in tasks like image recognition and natural language processing.
- Neural networks became central to the next generation of AI research, helping to power applications like speech recognition, image analysis, and autonomous systems.

6. Probabilistic Reasoning and Machine Learning (1987-Present)

- From the late 1980s onwards, AI research began focusing more on probabilistic reasoning and machine learning, particularly to handle uncertainty and improve decision-making.
- **Judea Pearl** made significant contributions to probabilistic reasoning, helping AI systems to make informed decisions under uncertainty using methods like Bayesian networks.
- The rise of statistical models, such as support vector machines and decision trees, advanced the field, making AI more adaptable and robust in solving real-world problems.

7. Deep Learning (2011-Present)

- In the 2010s, deep learning became a transformative force in AI, revolutionizing fields like computer vision, natural language processing, and speech recognition.
- Geoffrey Hinton, Yoshua Bengio, and Yann LeCun popularized deep learning, with Hinton's team winning the 2012 ImageNet competition using deep convolutional neural networks.
- Deep learning continues to drive major AI innovations, from autonomous vehicles to AI-driven medical diagnostics and natural language understanding.

8. AI in the Modern Era (2010s - Present)

- AI applications exploded in the 2010s, with breakthroughs in natural language processing (NLP), robotics, autonomous systems, and more.
- **AlphaGo**, developed by Google DeepMind, defeated the world champion in the game of Go in 2016, showcasing the power of deep learning and reinforcement learning.

- AI is now integrated into everyday technologies, from self-driving cars and virtual assistants like Siri and Alexa to recommendation systems on platforms like Netflix and Amazon.

Example 1.1

Who is considered the “father of artificial intelligence”?

- (a) Alan Turing (b) John McCarthy
(c) Marvin Minsky (d) Geoffrey Hinton

Solution: (b)**Example 1.2**

Which early AI program was capable of playing chess and was developed by IBM in the 1950s?

- (a) AlphaGo (b) Deep Blue
(c) IBM Watson (d) The Logic Theorist

Solution: (d)

Deep Blue was developed in the 1990s. For the 1950s, IBM’s early chess program was developed by Arthur Samuel and Claude Shannon.

1.4 RISK AND BENEFITS OF AI

Francis Bacon, in *The Wisdom of the Ancients* (1609), noted that “mechanical arts are of ambiguous use, serving as well for hurt as for remedy.” As AI increasingly impacts the economic, social, scientific, medical, financial, and military spheres, we must consider its risks and benefits. The potential of AI to free humanity from repetitive tasks and significantly boost production could lead to an era of peace and abundance. It could also accelerate scientific research, providing cures for diseases and solutions to climate change and resource shortages. As Demis Hassabis, CEO of Google DeepMind, stated: “First solve AI, then use AI to solve everything else”.

1.4.1 Benefits of AI

1. **Increased Productivity and Automation:** AI and robotics have the potential to free humanity from repetitive, menial tasks, increasing the efficiency of production across various sectors. This could lead to a future of greater economic prosperity, potentially ushering in an era of abundance and peace.
2. **Advancements in Scientific Research:** AI has the capacity to accelerate research in various fields, which could result in groundbreaking discoveries. For example, AI could lead to medical advancements like cures for diseases, as well as solutions to complex global issues such as climate change, resource shortages, and food security.
3. **Expansion of Human Potential:** By providing access to vastly superior machine intelligence, AI could raise the ceiling of human ambition, enabling us to achieve goals that were previously unimaginable. The synergy between human intelligence and AI could unlock new frontiers in science, technology, and society.

1.4.2 Risks of AI

1. **Lethal Autonomous Weapons:** Autonomous weapons that can identify and eliminate targets without human involvement pose significant risks, particularly due to their scalability. Without human oversight, these systems could be deployed in large numbers, making them a potential tool for mass destruction or misuse in warfare and conflict situations.

2. **Mass Surveillance and Social Manipulation:** AI-powered surveillance tools, such as speech recognition and facial recognition systems, could be used to monitor individuals on a large scale. Additionally, AI algorithms used in social media platforms can manipulate information flows, influencing political behavior and public opinion in ways that may undermine democratic processes and personal freedoms.
3. **Bias in Decision-Making:** AI systems, particularly those relying on machine learning algorithms, can perpetuate biases in society, such as racial, gender, or socioeconomic discrimination. These biases can manifest in decision-making processes for critical areas like parole evaluations, hiring practices, and loan approvals, potentially exacerbating inequality and injustice.
4. **Impact on Employment and Economic Inequality:** While AI may eliminate some jobs, it could also enhance human productivity, leading to higher wages and profits. However, the benefits may disproportionately favor capital over labor, contributing to greater economic inequality. Additionally, the automation of tasks could create new challenges in terms of retraining and re-employment, potentially displacing entire sectors of the workforce.
5. **Safety-Critical Applications and Risk of Accidents:** AI technologies are increasingly being deployed in safety-critical systems, such as autonomous vehicles and infrastructure management (e.g., water supply systems). While these technologies offer potential benefits, accidents have already occurred, highlighting the difficulty of ensuring the reliability of AI systems and the importance of robust risk management and safety standards.
6. **Cybersecurity Risks:** AI is a double-edged sword in the realm of cybersecurity. While it can help detect and defend against cyberattacks, it can also be used to create more sophisticated and effective forms of malware, such as personalized phishing or ransomware attacks. As AI becomes more advanced, the potential for malicious use will increase, posing a threat to both individual and national security.

Example 1.3

How does AI benefit the transportation sector?

- (a) AI eliminates the need for any form of human driving.
- (b) AI reduces road safety by automating vehicles.
- (c) AI enables autonomous vehicles that can reduce human error.
- (d) AI increases the number of traffic accidents due to automation.

Solution: (c)

AI enhances transportation by improving road safety, optimizing traffic flow, and enabling self-driving vehicles to minimize accidents caused by human error.

Example 1.4

What is one of the risks associated with AI in military applications?

- (a) AI can enhance operational efficiency without any ethical concerns.
- (b) AI may make autonomous decisions to engage in warfare without human oversight.
- (c) AI guarantees the complete elimination of human error in combat.
- (d) AI prevents all conflicts by making diplomatic decisions.

Solution: (b)

AI in military applications poses risks, including the potential for autonomous systems to make lethal decisions without human intervention, raising ethical and accountability concerns.



Student's Assignments

- Q.1** What is the main goal of Artificial Intelligence?
 (a) To create machines that can perform human-like tasks
 (b) To eliminate human jobs
 (c) To make computers faster
 (d) To understand human emotions
- Q.2** Which of the following best defines Artificial Intelligence?
 (a) Machines that can think and feel
 (b) Machines that can simulate human intelligence processes
 (c) Computers that run on advanced software
 (d) Software used to create simulations of robots
- Q.3** What is the primary advantage of AI over traditional programming?
 (a) AI can solve problems without human intervention
 (b) AI cannot make decisions
 (c) AI requires constant updates to its rules
 (d) AI is limited to predefined tasks
- Q.4** Which of the following is a core feature of AI systems?
 (a) Data storage and retrieval
 (b) Learning from experience
 (c) Restricted to a single algorithm
 (d) It only follows fixed instructions
- Q.5** The Turing Test was proposed by Alan Turing to assess:
 (a) The speed of AI systems
 (b) The ability of AI to mimic human behavior
 (c) AI's ability to solve logical problems
 (d) The creativity of AI systems
- Q.6** Which of the following describes Weak AI (Narrow AI)?
 (a) AI that can perform any intellectual task that humans can
 (b) AI focused on a specific task and unable to generalize
 (c) AI that exceeds human intelligence
 (d) AI that can reason and think abstractly
- Q.7** Strong AI (also called General AI) is capable of:
 (a) Solving one problem at a time
 (b) Understanding and learning any intellectual task that a human can
 (c) Performing simple, predefined tasks
 (d) Operating only under supervision
- Q.8** Artificial Superintelligence (ASI) refers to:
 (a) AI systems that perform tasks like humans
 (b) AI systems that can outperform humans in every domain
 (c) AI that can only learn specific skills
 (d) AI that replicates human emotions
- Q.9** Which of the following is a primary function of an intelligent agent?
 (a) To only perform repetitive tasks
 (b) To perceive its environment and act autonomously to achieve goals
 (c) To simulate human emotions
 (d) To execute tasks without learning from experience
- Q.10** An autonomous agent is one that:
 (a) Requires constant human supervision
 (b) Can perform tasks and make decisions independently
 (c) Can only operate with predefined instructions
 (d) Lacks the ability to interact with the environment

Answers Keys

- 1. (a) 2. (b) 3. (a) 4. (b) 5. (b)**
6. (b) 7. (b) 8. (b) 9. (b) 10. (b)

Explanations

1. (a)

The goal of Artificial Intelligence is to develop systems that can perform tasks requiring human-like cognitive abilities, such as learning, reasoning, and problem-solving. It is not focused on replacing jobs, simply increasing computing speed, or solely understanding emotions.